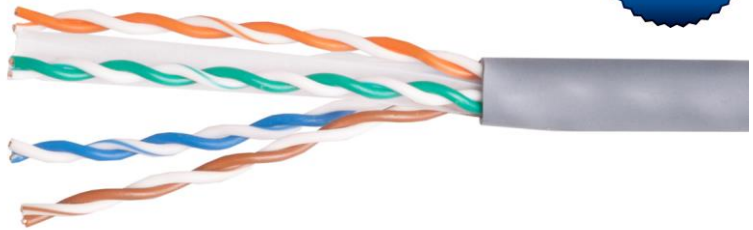


## Cat.6 U/UTP Installation Cable

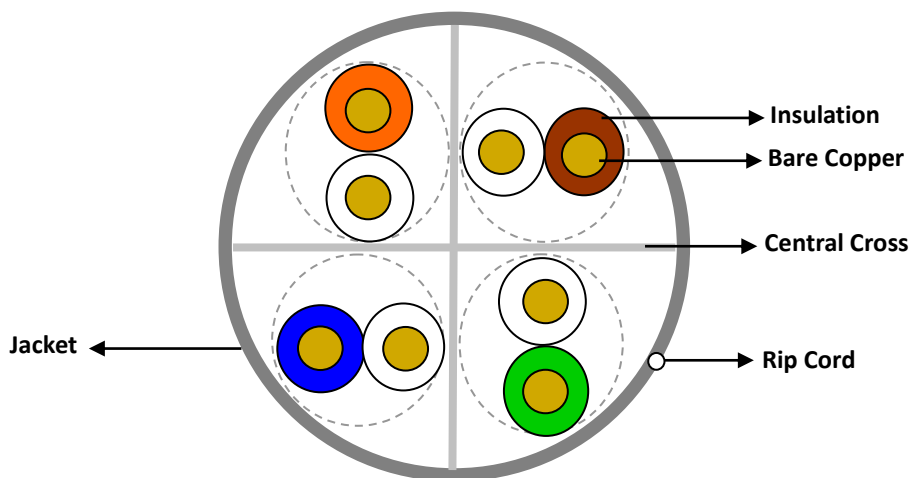


404521 (100M)

40146807 (305M)

The equip® Installation Cable is made of preeminent materials and thoroughly examined to meet or surpass industrial standards defined by the EIA / TIA, ISO and EN standard bodies. The performance is guaranteed via a comprehensive test including attenuation, return loss, NEXT (Next End Crosstalk) and FEXT (Far End Crosstalk) up to 250MHz and the hence the equip® Installation Cable serves well in the most demanding networking environments.

### | Structure





[www.equip-info.net](http://www.equip-info.net)

## Specification

<b>Conductor</b>	Material	Clad Aluminum
	Construction	23AWG, 1/0.57 ± 0.015mm
<b>Insulation</b>	Material	HD-PE
	Diameter	1.04 ± 0.04mm
	Colors	Blue-White/Blue, Orange-White/Orange, Green-White/Green, Brown-White/Brown
<b>Jacket</b>	Material	LSZH
	Thickness	MIN at any point: 0.40mm / MAX AVG: 0.55mm
	Diameter	6.4 ± 0.3mm
	Colors	Gray
	Marking	equip CAT.6 U/UTP LSOH 4PR 23AWG INSTALL CABLE ISO/IEC 11801 & ANSI/TIA-568-C.2 VERIFIED EN50575:2014 Fire Class Eca

## Electrical Properties

Electrical Characteristics (20°C)	1.0-250.0MHz, Characteristic impedance (Ω)	100 ± 15
	1.0-250.0MHz, Delay Shew 20°C(ns/100m)	≤45
	DC Resistance 20°C(Ω/100m) max	11.3
	DC Conductor Resistance Unbalance (%)max	5.0

## | Performance

(MHz)	RL ≥dB	ATT ≤dB	NEXT ≥dB	DELAY ≤ns
1	20.0	2.03	74.3	570.00
4.0	23.0	3.78	65.3	552.00
8.0	24.5	5.32	60.8	546.73
10.0	25.0	5.95	59.3	545.38
16.0	25.0	7.55	56.2	543.00
20.0	25.0	8.47	54.8	542.05
25.0	24.3	9.51	53.3	541.20
31.25	23.6	10.67	51.9	540.44
62.5	21.5	15.38	47.7	538.55
100	20.1	19.80	44.3	537.60
200	18.0	28.98	39.8	536.54
250	17.3	32.85	38.3	536.27

## | Ordering Information

PN	EAN	Length	Packing
404521	4015867202067	100m	Roll
40146807	4015867202067	305m	Carton

## | Typical Applications

- IEEE 802.3: 10Base-T; 100Base-T; 1000Base-T
- IEEE 802.5 16 MB; ISDN; TPDDI; ATM
- Class E ISO/IEC 11801 2nd Edition & EN 50173

Warranty time: 5 years